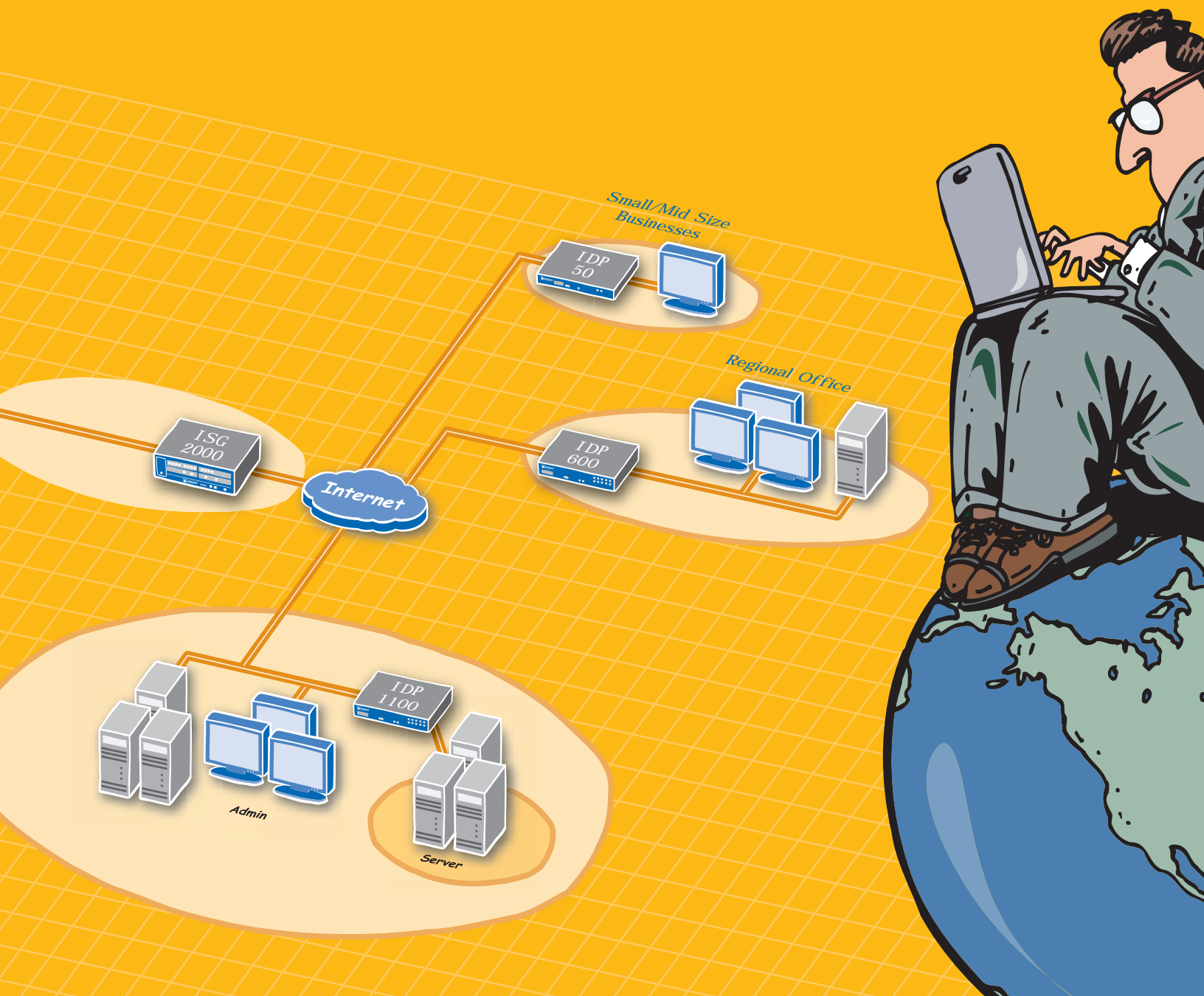


Security Solutions Portfolio

Juniper Networks Intrusion Detection and Prevention Solutions



Staying one step ahead

As the frequency and sophistication of network attacks increases, it's increasingly important that you stay one-step ahead. You can no longer just rely on solutions that merely react to new threats. Your solution must proactively protect your network based on newly found vulnerabilities and at times, even offer attack coverage before they run rampant.

Since network viruses and attacks can mutate not unlike its biological counterpart, your security solution must offer multiple attack detection methods and an efficient way to use the various capabilities.

To stay one-step ahead of these attacks, you need a solution that can adapt to ever-changing security threats and allow you to do so with minimal effort.

Most comprehensive attack coverage available

Juniper Networks IDP solution with its Multi-Method Detection (MMD™), offers comprehensive coverage by leveraging multiple detection mechanisms. For example, by utilizing signatures as well as other detection methods including protocol anomaly traffic anomaly detection, Juniper Networks IDP solution can thwart known attacks as well as possible future variations of the attack.

Backed by Juniper Networks Security Lab, signatures for detection of new attacks are generated on a daily basis. Working very closely with many software vendors to assess new vulnerabilities, it's not uncommon for Juniper IDP solution to be equipped to thwart attacks which have not yet occurred. Such day-zero coverage ensures that you're not merely reacting to new attacks but proactively securing your network from future attacks.

Minimizing false positives, increasing peace of mind

One of the top concerns in deployment of any IDP solution is false positives. Incorrectly identifying valid access and traffic as an attack could at times, be just as damaging as a true attack. Critical business activities can be delayed and additional IT resources needed to investigate and determine the nature of the false positives.

Juniper Networks IDP solution with its Stateful Signature Detection dramatically reduces false positives by examining the traffic in the context of the application. With full understanding of the application and its relevant traffic, Juniper Networks IDP solution can pinpoint the signature pattern-matching to the exact location where an attack can occur.

This application layer intelligence dramatically reduces the number of false positives compared to IDP solutions utilizing traditional non-stateful signature detection. In addition to the improved accuracy of the detection, the throughput of the solution is also optimized as the pattern detection is applied only to relevant network traffic.

Real-world performance without sacrificing security

Network throughput capacity of IDP solutions by itself often lends very little to the true performance of the appliance in a real-world environment. Many IDP solutions can exhibit very high throughput when only few attacks are being monitored. When more and more attack detections are enabled, the overall throughput can degrade. Also, while some appliances ship with default coverage settings optimized for performance, these settings often do not include the necessary attack coverage necessary in real-world deployments.

The throughput of Juniper Networks IDP solutions are measured as the performance of the product under real-world deployment scenarios. Naturally, in real-world deployments, almost all critical and high attack coverage relevant to the network should be enabled. Hence Juniper recommends that all new deployments enable the critical and high attack coverage before it is optimized for the particular network.



Juniper Networks
IDP 50



Juniper Networks
IDP 200



Juniper Networks
IDP 600



Juniper Networks
IDP 1100



Juniper Networks
ISG 1000



Juniper Networks
ISG 2000

Performance measured under such conditions means no surprises when it comes to security and throughput.

Appliances and integrated solutions to meet the needs of every organization

Juniper Networks IDP solutions span a wide range of products offering network security solutions for small, mid-size and large enterprises as well as data centers and service providers.

The appliance solutions can be deployed in existing networks to thwart network attacks and interface with other Juniper Networks products such as the firewall and SSL VPN solutions to provide the highest level of network security available. The integrated IDP solutions offer the combination of IDP and firewall capabilities in a single footprint simplifying installation, network management and maintenance.

Feature	Benefit
Stateful Signatures	<ul style="list-style-type: none"> Intelligently track the state of the connection/traffic and scan for attack patterns matching the signature Minimizes false-positives Optimizes performance
Protocol Anomaly Detection	<ul style="list-style-type: none"> Identifies attacks using ambiguous traffic for particular network protocol such as SMB file sharing and SNMP as well as VoIP protocols such as SIP
Backdoor Detection	<ul style="list-style-type: none"> Detect unauthorized interactive traffic due to worms or Trojans inadvertently installed on trusted node Detect attacks even if traffic is encrypted or utilized unknown protocol
Traffic Anomaly Detection	<ul style="list-style-type: none"> Identify attacks spanning multiple connections by comparing incoming traffic volume to baseline activities Thwart attack such as network probes and port scans
Network Honeypots	<ul style="list-style-type: none"> Proactively identify potential attackers by impersonating network services that do not exist Using the attacker's IP address, future attacks can easily be thwarted
Compound Signatures	<ul style="list-style-type: none"> Combine stateful signatures to identify possible attacks even across multiple sessions

Service and support when and where you need it

To ensure your network is always secure, the Juniper Networks IDP support offering includes the latest signatures and updates available from our Security Research Lab. Since new attacks can occur on a daily and sometimes hourly basis, your solution is not complete without the backing of Juniper Networks Security Research Lab.

Juniper Networks Professional Services consultants and authorized Juniper Networks partners are recognized as knowledgeable networking specialists throughout the industry. They are uniquely qualified to assist you in planning and implementing your IDP solution as well as other networking and security infrastructure.

Juniper Networks Customer Support Center provides assistance, software upgrades, security updates and online knowledge tools to ensure highest reliability of your Juniper Network products. Juniper Networks Educational Services help customers keep pace with rapidly evolving technologies by sharing their expertise on how to operate and maintain secure networks.

To purchase Juniper Networks IDP solution, please contact your Juniper Networks representative or authorized partners.

Juniper your Net™



**CORPORATE HEADQUARTERS
AND SALES HEADQUARTERS
FOR NORTH AND SOUTH AMERICA**

Juniper Networks, Inc.
1194 North Mathilda Avenue
Sunnyvale, CA 94089 USA
Phone: 888-JUNIPER (888-586-4737)
or 408-745-2000
Fax: 408-745-2100

www.juniper.net

Copyright 2006, Juniper Networks, Inc. All rights reserved.

Juniper Networks and the Juniper Networks logo are registered trademarks of Juniper Networks, Inc. in the United States and other countries. All other trademarks, service marks, registered trademarks, or registered service marks in this document are the property of Juniper Networks or their respective owners. All specifications are subject to change without notice. Juniper Networks assumes no responsibility for any inaccuracies in this document or for any obligation to update information in this document. Juniper Networks reserves the right to change, modify, transfer, or otherwise revise this publication without notice.

150025-002 Mar 2006

EAST COAST OFFICE

Juniper Networks, Inc.
10 Technology Park Drive
Westford, MA 01886-3146 USA
Phone: 978-589-5800
Fax: 978-589-0800

**ASIA PACIFIC REGIONAL
SALES HEADQUARTERS**

Juniper Networks (Hong Kong) Ltd.
Suite 2507-11, Asia Pacific Finance Tower
Citibank Plaza, 3 Garden Road
Central, Hong Kong
Phone: 852-2332-3636
Fax: 852-2574-7803

**EUROPE, MIDDLE EAST, AFRICA
REGIONAL SALES HEADQUARTERS**

Juniper Networks (UK) Limited
Juniper House
Guildford Road
Leatherhead
Surrey, KT22 9JH, U. K.
Phone: 44(0)-1372-385500
Fax: 44(0)-1372-385501