

Symantec Enterprise Vault™ 7.0

Store, Manage, and Discover Critical Business Information

The pressure on organizations to protect and manage data has intensified with the recent growth in unstructured data and the reliance on email to communicate and exchange documents. Many companies now consider email to be mission critical. In fact, recent studies suggest that email and other messaging applications store as much as 75 percent¹ of a company's intellectual property. So, how do organizations protect their email data when email is expected to be available 24 hours a day, seven days a week? And what if a legal challenge requires IT to find files and email related to last quarter's earnings? With little extra time to maintain backup windows, IT administrators are challenged to meet stringent business requirements. Also, in spite of exponential data growth and increasing user demands for data recoverability, IT budgets remain flat. Symantec Enterprise Vault software answers these challenges.

Managing millions of mailboxes for thousands of customers worldwide, Symantec Enterprise Vault provides an intelligent archiving platform that stores, manages, and enables the discovery of corporate data from email systems, file server environments, instant messaging (IM) platforms, and collaboration and content management systems. Because not all data is created equal, Enterprise Vault utilizes intelligent classification and retention technologies to capture, categorize, index, and store target data to enforce policies and protect corporate assets while helping to reduce storage costs and simplifying management. It also provides specialized applications, such as Discovery Accelerator and Compliance Accelerator, that mine archived data to support legal discovery, content compliance, knowledge management, and information security initiatives.

Features and benefits

- Automate mailbox management: Free users from quota frustrations without compromising Microsoft® Exchange performance and reliability.
- Optimize storage consumption: Archive email and documents intelligently to optimize storage utilization, reduce backup windows, and minimize costs.
- Eliminate PST headaches: Remove the problems of storage consumption, backup, security, and stability inherent in PST files.
- Enable faster backups and improve disaster recovery: Centralize the management of email content to help ensure faster backup of Exchange and controlled recovery in a disaster.
- Implement intelligent archiving: Give context and insight into archived content, filtering out noncritical material.
- Archive for legal and compliance: Archive and retrieve email and other business content to meet legal and regulatory compliance requirements.

Integrated content archiving

As enterprise data grows, it can consume terabytes or more of expensive storage. Storage dedicated to old or infrequently accessed data not only wastes precious space, but it also costs time and money to manage, maintain, and back up. Enterprise Vault addresses storage cost and resource issues by providing a centralized, integrated content archiving

¹ Duplessie, Steve and Gerr, Peter A. "Unlocking the True Power of Enterprise Message Management: Beyond Tactical Email Archiving Towards a Strategic Comprehensive Information Governance Infrastructure," Enterprise Strategy Group, September 2005.

solution that pulls corporate data from multiple sources (see Figure 1). These sources include:

- Email systems and PST files
- File servers
- Microsoft SharePoint® portals
- Enterprise content management systems
- Databases and ERP systems
- Instant messaging systems
- Bloomberg
- Fax

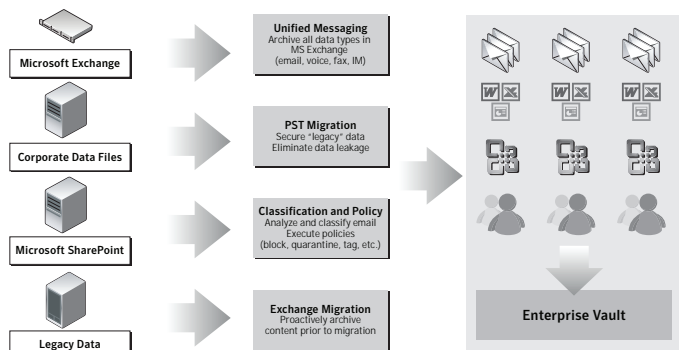


Figure 1. Symantec Enterprise Vault integrated content archiving solution

Automate mailbox management

Now you can eliminate quotas and message size restrictions and give users a mailbox of virtually unlimited size while also controlling message store growth (see Figure 2). Also, significantly reduce the time spent dealing with mailbox housekeeping. Admin-defined policies automatically archive individual mailbox email and attachments from Exchange into online Enterprise Vault stores. Optionally, shortcuts are provided, allowing users to easily view or restore the original items transparently through Microsoft Outlook® or via extended Web-based search functions. This enables

Exchange to focus on handling newer information dynamically, while Enterprise Vault acts as a high-scale, long-term repository for older information. Thus server performance is dramatically improved, and users enjoy instant access to all of their email without the associated cost and management.

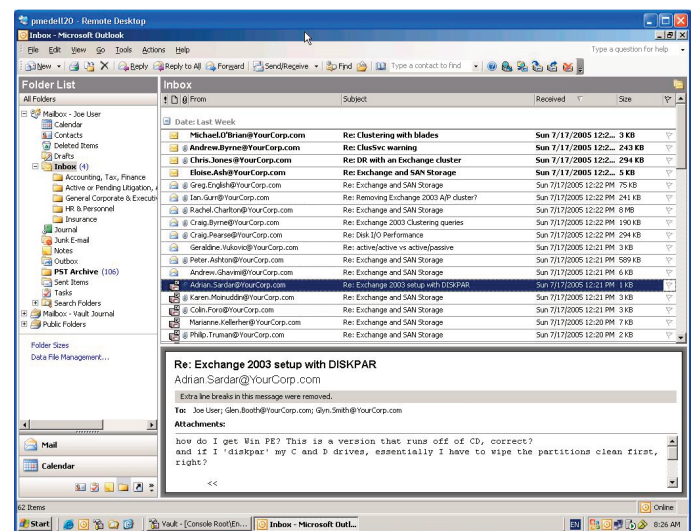


Figure 2. Mailbox management

Optimize storage consumption

By reducing the size of data stores in applications such as Microsoft SharePoint Portal Server or Exchange, organizations improve the performance of primary applications and the speed with which they can protect the underlying data (see Figure 3). Search tools within Enterprise Vault, such as the ability to search the archive, enable IT groups to improve their service level agreements by automating many administrative tasks.

Enterprise Vault acts as an online archive for older items that are moved from primary application storage (for example, Microsoft Exchange Server) according to company-defined policies. It also leverages single instance storage and

compression technologies to further reduce the data footprint (see Figure 4). By controlling the size of the message store, the applications and servers hosting them remain focused on real-time transactions. The online archive also enables organizations to rationalize their storage resources and dedicate primary storage to dynamic and transactional data. Older, less frequently accessed content can be moved to a secondary or tertiary storage device, saving money for more strategic purposes.

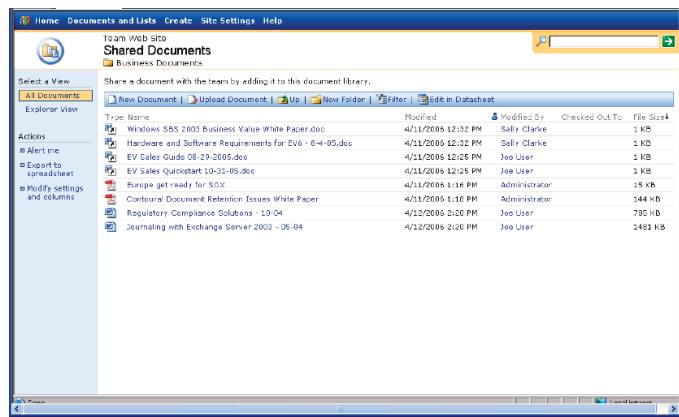


Figure 3. Microsoft SharePoint archiving

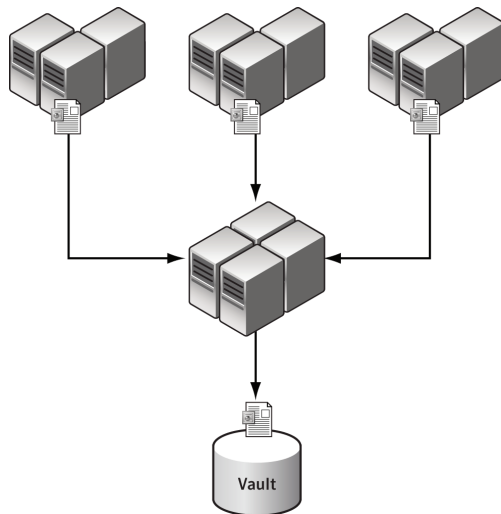


Figure 4. Enterprise Vault single instance storage

Eliminate PST headaches

PST files (also known as personal folders or Outlook data files within Outlook) were not designed to handle the rigorous demands of today's large-scale corporate email requirements. However, many companies commonly move email from Exchange to PST files for retention. Ultimately, these files create more problems than they solve, however. They are one of the main reasons why many organizations eventually seek an enterprise archiving solution. Enterprise Vault software helps organizations solve these issues by migrating PST files into a central archiving repository. Restoring user accessibility to this data enables the organization to effectively eradicate PST files.

Enable faster backups and improve disaster recovery

Combining backup and recovery technologies with archiving enhances traditional backup and recovery by reducing the data stores of applications such as Exchange, SharePoint, or file servers. Smaller data stores shrink backup and recovery times and can help save money on storage and storage management. More important, this archived data can be leveraged for greater value through search and retrieval tools. End users benefit from the ability to initiate their own restores quickly, and IT groups spend less time on administrative restore requests. Freed from end-user administrative tasks, IT can focus on strategic projects and better meet business requirements.

Enterprise Vault can also facilitate quicker restores in the event of a disaster, as the storage savings typically can be applied to restore times. This helps organizations accomplish their main objective of making Exchange or production data operational in the shortest time possible to help ensure that email and other applications are up and running.

Implement intelligent archiving

Because different types of content have different values (for example, business, personal, junk, and so on), companies are increasingly interested in controlling archive storage and operational costs. Intelligent archiving is a flexible methodology to shape the Enterprise Vault archive and store only business-valued content with context. This is accomplished through accurate classification options using automated classification, user-driven classification, or third-party (for example, records management) approaches. Once data is classified, powerful policy enforcement applies retention/deletion rules granularly across different classes of information and administers better utilization of tiered storage. This helps significantly lower operational cost, as the size of the archive is kept in check. Providing context gives more structure to the archive and enables an intelligent means to search, discover, and leverage archived information on an open platform, allowing customization and innovation.

Archive for legal and compliance

Any IT administrator who has had to respond to a corporate lawsuit or monitor compliance understands the difficulty of aggregating and delivering files, messages, or other content for legal scrutiny. Discovery Accelerator, a highly configurable add-on solution to Enterprise Vault, automates the gathering, review, and markup process related to lawsuits. It enables IT to quickly deliver specified content and provides the legal team with a tool to manage the review process. Compliance Accelerator, another configurable add-on solution with functionality similar to Discovery Accelerator, helps companies in financial services, health care, energy, and other heavily regulated industries monitor corporate data systematically on an ongoing basis.

Product highlights

Centralized administration and reporting: Single point of administration provides advanced reporting, monitoring, and diagnostics of the archive, helping to ensure consistent performance and availability.

Role-based administration: Increases security by defining and regulating what can be done on which objects.

Native IM archiving: Archives corporate IM traffic with certified support for the leading consumer IM networks and enterprise IM platforms.

Support for Microsoft ecosystem: Supports Microsoft Outlook and Outlook Web Access, Windows® Desktop Search, Windows Rights Management Services, Microsoft Cluster Server, and SharePoint Portal Server.

Open Storage Layer: The Open Storage Layer provides flexibility, allowing the archive to evolve as storage technologies and organizational needs change.

Awards and certifications

Microsoft®
GOLD CERTIFIED
Partner



Data Sheet: Data and System Protection Symantec Enterprise Vault 7.0

More information

Visit our Web site

www.symantec.com/enterprisevault

To speak with a Product Specialist in the U.S.

Call toll-free 1 (800) 745 6054

To speak with a Product Specialist outside the U.S.

For specific country offices and contact numbers, please visit our Web site.

About Symantec

Symantec is a global leader in infrastructure software, enabling businesses and consumers to have confidence in a connected world. The company helps customers protect their infrastructure, information, and interactions by delivering software and services that address risks to security, availability, compliance, and performance. Headquartered in Cupertino, Calif., Symantec has operations in 40 countries. More information is available at www.symantec.com.

Symantec World Headquarters

20330 Stevens Creek Boulevard
Cupertino, CA 95014 USA
+1 (408) 517 8000
1 (800) 721 3934
www.symantec.com

