

Sophos Endpoint Security and Control offers a single solution for anti-virus and anti-spyware protection, client firewall, management of removable storage devices, unauthorized software and NAC, giving you the best preventive protection and endpoint assessment and control. A single license means you can protect all users and computers across Windows, Mac, Linux and other non-Windows platforms.

Fast and preventive protection

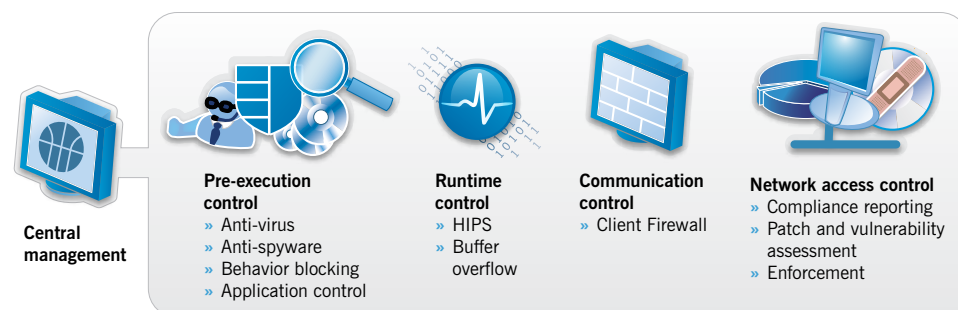
A unified single client blocks malware, adware, suspicious files and behavior, removable storage devices and unauthorized software such as IM, VoIP, P2P and games. Its fast scanning engine and built-in intrusion-prevention technologies detect new and zero-day threats without the need for a malware signature update. Preventive protection is delivered by integrated network access control functionality that ensures all computers connecting to the network meet your security standards.

Simplified and automated management

Our management console reduces administrative burden by automating the deployment of protection, and simplifying policy management and reporting. The dashboard provides instant visibility of the protection status across Windows, Mac and Linux platforms, and enables the centralized clean up of malware, and fixes non-compliant computers.

Trusted support

Every Sophos customer receives unlimited 24x7 technical support from in-house support experts. The global network of SophosLabs™ researchers use pioneering detection technologies to protect businesses from known and emerging threats, such as malware, phishing and spam. Professional Services packages, delivered by experienced Sophos consultants, help to ensure that customers receive the maximum return on investment.



Key benefits

- » Eliminates known and unknown threats with a single, centralized solution. Detects and removes viruses, spyware, Trojans, adware and PUAs
- » Controls applications that can adversely impact network and user productivity, such as VoIP and IM
- » Allows assessment of the security status of managed and unmanaged computers. Alerts of issues such as a disabled patch agent or firewall, and can provide automatic resolution
- » Enforces protection against unknown users gaining access to your network
- » Reduces risk of data loss by controlling the use of removable storage devices
- » Lets you rapidly create and update security policies, and deploy them across multiple groups simultaneously
- » Receives and centrally deploys small, fast automatic updates every five minutes
- » Allows automatic deployment to new computers through Active Directory synchronization
- » Lets you instantly identify vulnerable computers to check compliance, update policies and clean up threats
- » Provides role-based administration privileges assigned with Helpdesk and Read-only consoles
- » Enables a wide range of customized, graphical reports to be created on virus alerts, infections and status of protection
- » Includes 24x7x365 support for the duration of the license and one-to-one assistance

Faster, low-impact protection

One scan with our single anti-virus client detects viruses, spyware and adware, suspicious behavior and files, removable storage devices and unauthorized applications.

- Sophos updates are small in size and are released as frequently as every five minutes – an advantage for companies wanting fast protection with low impact on network resources.
- Decision Caching™ technology improves on-access scanning performance by intercepting and scanning only the files that have changed since last accessed.
- SophosLabs signatures control applications that can adversely impact network and user productivity, such as VoIP and IM.

Effective zero-day protection

Sophos HIPS, technology pioneered by SophosLabs, provides detection that automatically guards against new and targeted threats and can detect over 85 percent of unknown threats.

The built-in intrusion-prevention technology detects malware, malicious and suspicious behavior and files, and delivers proactive protection without complex installation and configuration. Scanning is performed using Sophos's anti-virus engine, without the need to deploy any additional components.

This innovative technology uniquely analyzes the behavior of code at two stages:

- Pre-execution – behavior of code is analyzed before it runs and is prevented from running if it is considered to be suspicious or malicious.
- Runtime – intercepts threats that cannot be detected before execution.

Preventive protection reduces risk of infection

By identifying managed and unmanaged computers with potential security flaws, like out-of-date anti-virus protection or a disabled firewall, you can reduce the risk of infection. You can choose to either block non-compliant computers or ensure that security is improved to meet a required standard before allowing access.

- Default policies check if anti-virus and client firewall protection is active and up to date on managed and unmanaged computers.
- Sophos NAC agent checks if Microsoft operating system service packs are installed, and that Microsoft/Windows Update is enabled.
- Enforcement options ensure that any unauthorized computers are not granted access to your network.



Software components

Enterprise Console

A single, automated console for Windows, Mac and Linux that centrally deploys and manages anti-virus and client firewall protection, intrusion prevention, device and application control and endpoint assessment and control.

Sophos Anti-Virus

A single anti-virus client that detects viruses, spyware and adware, suspicious files, suspicious behavior, removable storage devices and unauthorized VoIP, IM, P2P and gaming software across multiple platforms in just one scan.

Sophos NAC

A network access control solution that assesses managed, unmanaged and unauthorized computers to detect configuration issues, such as out-of-date anti-virus protection or a disabled firewall and optionally fixes them before allowing access.

Sophos Client Firewall

A centrally managed client firewall, designed for the enterprise environment, that blocks worms, stops hackers, and prevents intrusion from hackers.

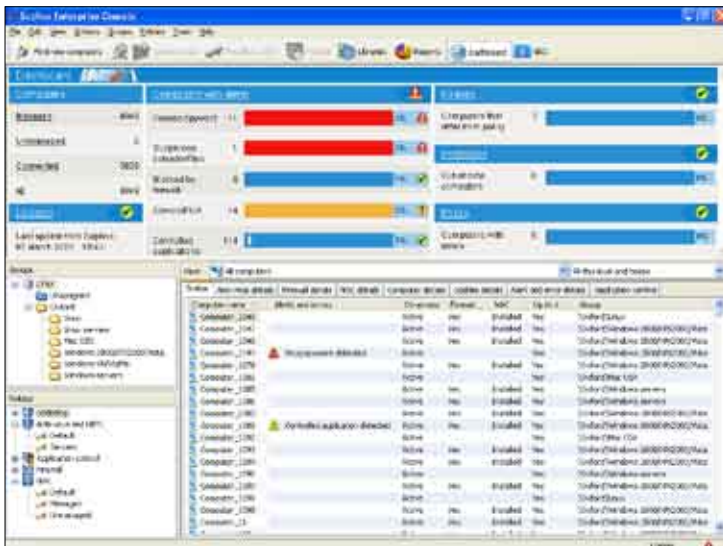
Sophos Mobile Security

Anti-virus and anti-spyware protection for Windows Mobile smartphones and PDAs.

Simplifying deployment and administration

Sophos Enterprise Console simplifies management of Windows, Mac and Linux protection, centralizing deployment, updating, reporting and security policy enforcement. It manages anti-virus and client firewall protection, and endpoint assessment and control, providing unrivalled visibility of the security status of your entire network.

- The console synchronizes with Active Directory to ensure your chosen security policy is automatically enforced as new computers join your network.
- Outbreak risk levels across the entire network are displayed on the security dashboard and automatic email alerts are sent when your chosen security thresholds are threatened.
- Protection is automatically updated as frequently as every five minutes – and because you control the download rate, you can preserve bandwidth.
- Endpoint computers can be completely disinfected in a single, simple operation from the console.
- ActivePolicies in the console allows you to create a policy once and then apply it across multiple groups, on Windows, Mac and Linux computers.
- Policies cover updating schedules, anti-virus and HIPS, client firewall, application control and NAC.
- Integrated graphical reporting delivers instant and scheduled email reports of threat alerts and infections while the security dashboard gives you an at-a-glance report of outbreak risk.



Technology bytes

ActivePolicies™

Lets you create a new security policy once and then deploy it across multiple groups simultaneously

Application Control

Allows you to selectively authorize or block legitimate applications that impact network bandwidth, system availability, and user productivity

Device Control

Helps you control the use of removable storage, optical media drives and wireless networking protocols

Behavioral Genotype Protection

Delivers the benefits of a Host Intrusion Prevention System (HIPS), guarding against unknown threats by analyzing behavior before code executes

Centralized cleanup

Lets you deal with malware and PUAs remotely from a central location, saving time and cost

Decision Caching™

Provides performance-enhanced on-access scans by ensuring that only those files that have changed are scanned

Genotype® technology

Provides proactive protection from new variants of virus and spam families, even before specific, signature-based protection becomes available

Smart Views

Lets you instantly focus on vulnerable computers – including remote computers – to check compliance, update policies and clean up threats

Sophos AutoUpdate™

Offers failsafe updating and can throttle bandwidth when updating over low-speed network connections

SQL database support

Caters for the increased data storage requirements of even the largest network, while the built-in MSDE database will satisfy most organizations' requirements

Stealth mode

Lets Sophos Client Firewall prevent computers responding and falling victim to hacker attacks

Trusted support from the experts

All Sophos products are supported by experienced Sophos teams who are on hand to ensure you benefit from the best protection, and maximum return on investment.

- Highly-skilled analysts in SophosLabs, our global network of threat analysis centers, provide proactive rapid protection against known and unknown threats.
- Through technology, global visibility of emerging threats, and integrated threat expertise, SophosLabs provides the 24x7 research and fast global response your organization needs to protect it from increasingly complex threats.
- Our round-the-clock technical customer support operation is included as standard in every license and includes access to our in-house customer support team.
- Our support engineers provide one-to-one support by email or telephone, or you can take advantage of our web-based support knowledgebase.
- Sophos Professional Services team can demonstrate how to get the most out of Sophos products through optimizing your implementation.

Simple pricing and licensing

- A subscription-based license entitles you to protection, management and product updates, as well as technical support.
- Web Security and Control, Email Security and Control, and NAC Advanced services can all be included in one license.

Languages supported

English, French, German, Italian, Japanese, Spanish, Simplified and Traditional Chinese.

Note: Not all functionality/language support is available on all platforms.

Evaluate now for free

See Sophos Endpoint Security and Control in action by registering for a free 30-day evaluation at www.sophos.com/eseval

How to buy

Find your local Sophos office or Sophos Partner at www.sophos.com/contact. We also offer competitive pricing for charities, government agencies and the education sector.

ds/080430

Platforms supported

SOPHOS ANTI-VIRUS

- » **Windows**
2008 Server/Vista*/2003*/XP*/2000/98/Me/NT4/Mobile**
- » **VMWare**
ESX 3.0/Workstation 5.0/Server 1.0
- » **Non-Windows platforms**
Mac OS X/Linux**/UNIX**/NetApp Storage Systems/OpenVMS/NetWare

SOPHOS NAC

- » **Windows**
Vista/XP/2000

SOPHOS CLIENT FIREWALL

- » **Windows**
Vista/XP Pro or Home/2000 Pro

ENTERPRISE CONSOLE

Management server

- » **Windows**
2003 Server/2000 Server/
2003 Server 64-bit
- » **VMWare**
ESX 3.0/Workstation 5.0/Server 1.0

Remote console

- » **Windows**
2003/2000 Pro or Server/XP Pro
- » **VMWare**
ESX 3.0/Workstation 5.0/ Server 1.0

Platforms managed

- » **Windows**
2008/Vista/2003/XP/2000/98/Me/NT4
- » **Mac OS X**
Versions 10.2/10.3/10.4
- » **Linux**

* Including AMD64 and Itanium 64-bit versions

** For full details, visit www.sophos.com

Sophos enables enterprises worldwide to secure and control their IT infrastructure. Our network access control, endpoint, web and email solutions simplify security to provide integrated defenses against malware, spyware, intrusions, unwanted applications, spam, policy abuse, data leakage and compliance drift. With over 20 years of experience, we protect over 100 million users in nearly 150 countries with our reliably engineered security solutions and services. Recognized for our high level of customer satisfaction, we have an enviable history of industry awards, reviews and certifications. Sophos is headquartered in Boston, MA and Oxford, UK.

Boston, USA • Mainz, Germany • Milan, Italy • Oxford, UK • Paris, France
Singapore • Sydney, Australia • Vancouver, Canada • Yokohama, Japan

© Copyright 2008. Sophos. All rights reserved. All trademarks are the property of their respective owners.

SOPHOS
secured.