

# Actividentity AAA Server

➤ Scalable strong authentication solution

## Enterprise AAA server with integrated WLAN security

Actividentity AAA Server is a strong scalable RADIUS and TACACS+ compliant server. Offering full Authentication, Authorization, and Accounting services, Actividentity AAA Server enables enterprises to secure and manage WLAN and remote network access with two-factor authentication. It is the only one-time password authentication server on the market that has native WLAN security and fully integrates with your existing corporate directory.

### Key features

#### Enhanced security:

- Integrated WLAN security Wireless Protected Access (WPA) 802.1x authentication.
- Allows local initialization of tokens and smart cards, ensuring that keys are securely deployed.
- When deploying smart card devices, all private keys are generated and stored on the smart card providing secure storage and protection from unauthorized users.

#### Easy implementation and administration:

- Supports LDAP directories and SQL compatible databases, therefore requiring no proprietary database—enabling centralized administration with distributed authentication.
- Designed for easy installation and deployment.

#### Secure dial-up and VPN

- Supports any third party dialer and is integrated with Microsoft® Dialer.
- Supports all market leading VPN vendors and seamlessly integrates with Check Point™.

#### Secure web access

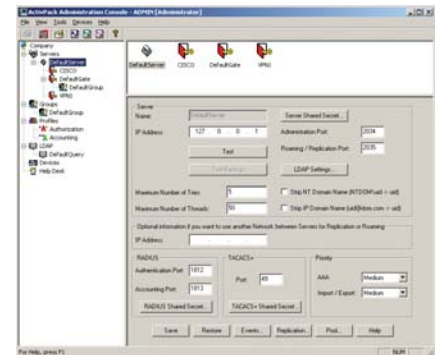
- Provides strong one-time password authentication for any website running on IIS or Sun ONE web servers, as well as Microsoft Outlook® Web Access.

#### Secure wireless LAN

- Integrates 802.1x authentication which meets Wireless Protected Access (WPA) standards and supports Microsoft® and Cisco® clients.

#### Secure terminal services

- Secure login to Citrix® MetaFrame® Presentation Server - Web Interface.



## Benefits

### Compelling ROI:

Provides a lower total cost of ownership than the competition—even if existing two-factor remote access technology is in place. LDAP-centric integration eliminates dual administration.

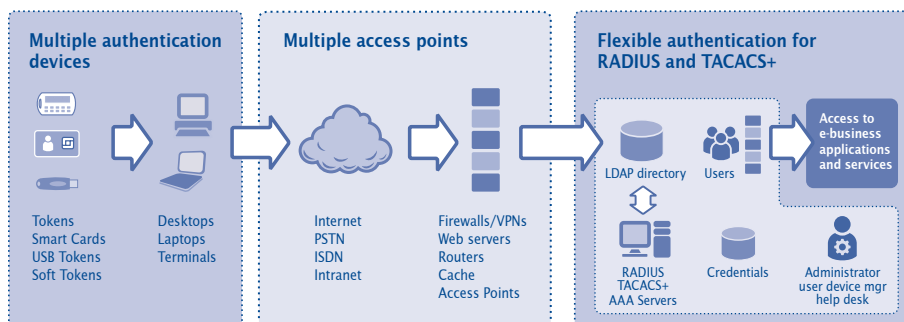
### Smooth bridge and migration:

Supports all current and future authentication needs. Allows enterprises to deploy a mixed environment of static passwords, tokens, soft tokens, USB keys, and smart cards to allow migration from a single function token solution to a multi-application smart card-based environment.

### Ease-of-use:

Brings the ATM experience to network computing, simplifying the user experience with the universally accepted PIN entry method. PIN entry allows access to multiple authentication credentials on a single smart card device.

## Actividentity AAA Server architecture for remote access



Actividentity AAA Server is an enterprise solution for verifying user authentication requests and instantly enforcing security policies across distributed sites worldwide.

## ActivIdentity AAA Server components

- Administration Console
- Authentication Server (RADIUS, TACACS+, IEEE 802.1x)
- Optional Components
  - Web help desk & self service portal
  - Web access agent (IIS & Sun One)
  - Citrix Presentation Server - Web Interface agent
  - Novell NMAS agent
  - Realm Proxy
- Interfaces and APIs
  - Help desk and self service interface web API (SOAP/HTTPS)
  - Remote Authentication API (ANSI C)

## Administration services

- Administrator
  - Manage authentication server parameters and access gates
  - Define authorization, authentication and accounting profiles
  - Define authorization profiles based on conditional statement
- Audit Manager
  - Consolidate, view, and delete auditing logs
- Device Manager
  - Create, delete, and initialize devices
  - Assignment of devices
- Help Desk
  - Lock, unlock, and resynchronize personal devices
  - Activate, deactivate emergency access
- Self Service Portal
  - Unlock and resynchronize
  - Report lost, stolen devices

## Security services

- EAP-TLS, PEAP-GTC, PEAP-MSCHAPv2
- Authenticate users from routers, firewalls, APs, VPNs, or Web servers
- Encryption of:
  - Administration database
  - Remote administration sessions
  - Device to server authentications
  - Authentication server exports
  - User PIN, credentials, and keys
- Import/export secret key management

## Authentication options

- One-Time Password, Static Password, LDAP Password, X509 Certificate, Short

- Message Service (SMS)
- Hardware tokens
  - ActivIdentity Token
  - ActivIdentity Keychain Token
  - ActivIdentity Mini™ Token
  - ActivIdentity Token XL
- Soft Token for PC, JavaPhone™, Palm® and PocketPC
- USB Key Java 64k
- 32k, 64k Java Card™

## Compliance with industry standards

- Data Encryption Standard: 3DES
- Challenge/Response: ANSI X9.9
- Key Management: ANSI X9.17
- Radius RFC 2865, 2866 and 2869
- RADIUS support for EAP: RFC 3579, 3748
- EAP-TLS RFC 2716

## Compatibility

- Any RADIUS and TACACS+ server or client (Firewalls, VPNs, Routers, 802.1x compliant Access Points)
- Check Point FireWall-1®
- Check Point VPN-1 SecuRemote™
- Cisco Systems Secure PIX® Firewall
- Cisco Systems Secure VPN
- Cisco® 802.1x clients
- Citrix MetaFrame Presentation Server Web Interface
- Funk Odyssey 802.1x client
- Juniper Firewall and VPN
- Microsoft 802.1x clients
- Microsoft IIS web server
- Microsoft RAS client
- Microsoft Outlook Web Access - Forms-Based
- Nortel Networks™ Contivity
- Novell Modular Authentication Service (NMAS)
- Microsoft SQL Server, Microsoft Desktop Engine, Oracle® databases
- SunOne Web server
- Directory Services: Critical Path Directory Server, IBM® Tivoli® Directory Server, Microsoft Active Directory, Novell® eDirectory™, Sun Java™ System Directory Server
- Leading reporting tools server

## System requirements administration console

- Intel® Pentium® III 650MHz

- 128 MB
- 100 MB hard disk
- Windows 2000(SP4), Windows XP Pro (SP1) or Windows Server 2003 SP1
- ODBC compatible database

## Authentication server

- Windows
  - Intel Pentium III 650 MHz
  - 128 MB RAM, 4 GB hard disk
  - Windows 2000(SP4) or Windows 2003
  - ODBC compatible database

## Web help desk & self service portal

- Internet Explorer 5.5 SP2 or later

## Web access agents

- Sun ONE Web Server 6.0, iPlanet Web Server 6.0
- Microsoft IIS 5.0, 6.0/Windows 2000/2003
- Internet Explorer 5.5 SP2 or later

## ActivIdentity related documents

- ActivIdentity Mini™ Token Data Sheet
- ActivIdentity Token XL Data Sheet
- ActivIdentity USB Key Data Sheet
- ActivClient™ Data Sheet

To find out more about  
 ActivIdentity AAA Server or  
 for more information about  
 Secure Remote Access, visit  
 our website

[www.actividentity.com](http://www.actividentity.com)

Americas	+1 (510) 574 0100
US Federal	+1 (571) 522 1000
Europe	+33 (0) 1 42 04 84 00
Asia Pacific	+61 (0) 2 6208 4888
Email	info@actividentity.com

